

Attachment #3



## Delaware County Commissioners

Jeff Benton  
Barb Lewis  
Gary Merrell

County Administrator  
Michael Frommer

Deputy Administrators  
Dawn Huston

Clerk to the Commissioners  
Jennifer Walraven

September 3, 2019

WILLIAMS ANGELA M & EDWIN J JR  
1946 FORD RD  
DELAWARE, OH 43015

Dear Landowner:

To: Owners of Land Affected by the Watson-Ford #25 Drainage Improvement Petition

You Are Hereby Notified that on August 2, 2019, the Clerk of this Board gave notice to the Board of County Commissioners and the County Engineer of Delaware County, Ohio, on the filing with her of a petition signed by Subhajit and Jennifer L. Datta and Other Landowners to:

- Generally improve the drainage, both surface and subsurface, to a good and sufficient outlet by replacing or repairing, or altering the existing improvement as required and/or creating new surface and subsurface drainage mains or laterals as requested by this petition.

- In Delaware County, Liberty Township, within the Watson-Ford #25 watershed and generally following, but not limited to, the course and termini of the existing improvements.

If the petition is approved, all cost of engineering, construction and future maintenance will be assessed to the benefiting parcels of land. By receipt this letter, you are informed that your property may be considered a benefiting parcel.

You are Hereby Notified that, that Monday October 14, 2019 at 1:30P.M., is hereby fixed as the time for the view thereon. It has been determined that due to access and traffic safety concerns the location and method of view of the proposed improvement area shall take place at the Office of the Board of County Commissioners, 101 North Sandusky Street Delaware, Ohio with the use of video technology. At the scheduled viewing time, a video will be available to gain an overview of the project limits and zoom into specific areas the landowners would like the Commissioners to see. This date of Monday October 14, 2019 at 1:30PM will not be for testimony for or against the petition, but an opportunity to show the Commissioners the landowners' watershed area concerns.

You Are Hereby Notified that, prior to October 14, 2019 Delaware County Engineering Staff members will be in the watershed area and with the use of drone technology, will be gathering video of the entire project limits and associated drainage.

You are Hereby Further Notified that **Thursday, January 9, 2020, at 10:00A.M.**, at the Office of the Board of County Commissioners, 101 North Sandusky Street Delaware, Ohio, be and the same is hereby fixed as the time and place for the first hearing on the petition.

If you have engineering type questions, you may wish to contact the Soil and Water Conservation District directly at 740-368-1921 at extension 4.

All interested parties are encouraged to attend.

Sarah Dinovo  
Assistant Clerk to the Board of Commissioners Delaware County  
101 N. Sandusky Street  
Delaware, OH 43015  
740-833-2105

Delaware County Commissioners, 101 North Sandusky Street, Delaware, Ohio 43015  
PHONE: (740) 833-2100 FAX: (740) 833-2099 WEB: [www.co.delaware.oh.us](http://www.co.delaware.oh.us)  
FACEBOOK: @DelawareCountyOhio TWITTER: @DelawareCoOhio

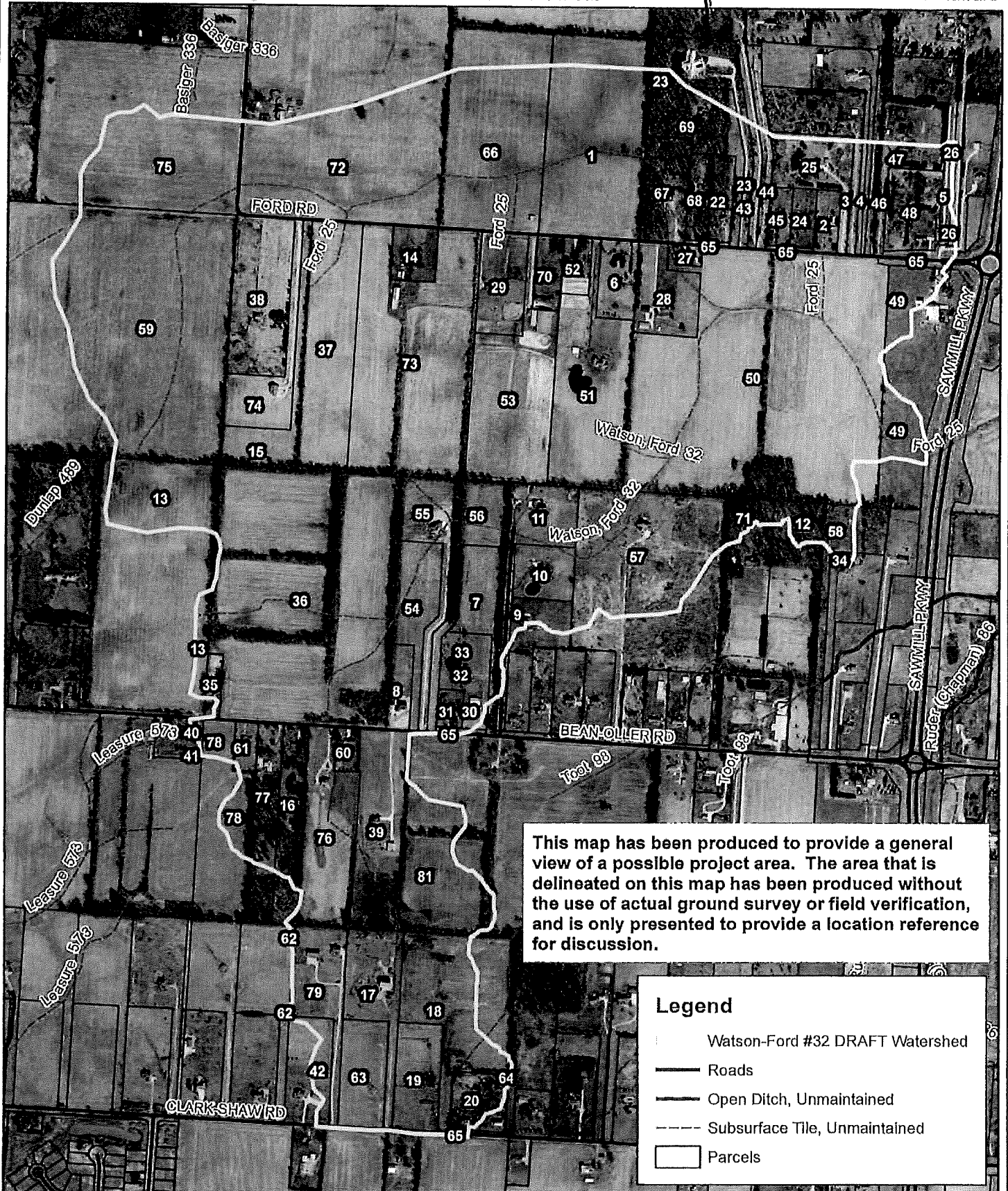
Attachment #3

(small portion of drive in) 1946 Ford Rd.

4/9/2019

Watson-Ford #32

Photo: 2018 Delaware



This map has been produced to provide a general view of a possible project area. The area that is delineated on this map has been produced without the use of actual ground survey or field verification, and is only presented to provide a location reference for discussion.

### Legend

- Watson-Ford #32 DRAFT Watershed
- Roads
- Open Ditch, Unmaintained
- Subsurface Tile, Unmaintained
- Parcels



Delaware Soil & Water Conservation District  
557 Sunbury Rd. Suite A  
Delaware, OH 43015  
(740) 368-1921 [dswcd@delawareswcd.org](mailto:dswcd@delawareswcd.org)  
[www.delawareswcd.org](http://www.delawareswcd.org)



0 450 900 Feet

Note:  
Delaware SWCD makes no guaranty or  
warranty as to the accuracy of the  
information on this map.

